



## CONTACT US

-  15 Ekere Street, Rumuobiakani off Bridge Bus Stop Aba Road, Port Harcourt, Nigeria
-  08129832179, 08037488812
-  <https://design.bamfirm.com/>
-  [info@bamfirm.com](mailto:info@bamfirm.com)
-  [bamconsults](#)
-  [bam consults](#)

# B A M C O N S U L T S



## COMPANY PROFILE





## WHO WE ARE...



- We are one of Africa's fast rising Architectural Design and Building Construction firm, founded in 2009 and registered with the Corporate Affairs Commission of Nigeria, with Registration Number (RC: 854238)
- We are a team of Architects, Engineers, Builders and Construction professionals, working together to execute the delivery of excellent and timeless structures in Africa.





## OUR CORE VALUES



- CUSTOMER CENTRICITY-  
We uphold client satisfaction in very high esteem
- INTEGRITY-  
Our word is our bond
- EXCELLENCE-  
We pay attention to every details and give every project the best possible shot
- INNOVATION-  
Optimum creativity is our utmost approach





## OUR STRATEGY

Our strategy is defined by a simple acronym, FLASH...

**F**unctionality - We build to meet the intended need

**L**andmark - Our projects stand out as reference points

**A**esthetic appeal - Our projects are always beautiful

**S**peed - We deliver within the best possible time

**H**ighly cost-effective - We are cost-save driven



PAGE 05



PAGE 06

## THE MD'S STATEMENT

According to Charles Fletcher Lummis "Any fool can write a book and most of them are doing it; but it takes brains to build a house."

I discovered the intricacies and complications involved in erecting an excellently finished building, and also saw the level of mediocrity being displayed in many building construction sites in our environment and felt sincerely dissatisfied and thereby responded to the strong drive and passion to set new standards in the design and construction of buildings.

This passion is what gave birth to Bam Consults Ltd.

We at Bam are fully committed to the delivery of structures that are excellent and timeless, buildings that can stand the test of time. We are a team of building industry experts who have, over the years, built a culture of non compromise to best quality building industry practices. We are compelled by a drive to never stop learning and growing.

We also understand that no building either big or small comes cheap to build, so we place value over every Naira or dollar invested into the erecting of building structures thereby we have always owed it to our clients to help them ensure that every money invested counts.

As you keep going through our profile we will take you through some of the projects we have been privileged to bring to life in our years of practice and we hope to give you reasons to believe in our ability and capacity to deliver. We promise to stay committed to our core values and never to give any room for compromise.

Thank you  
**AB Emeruwa**  
MD/CEO BAM





CERTIFICATE OF INCORPORATION







## HEALTH, SAFETY & ENVIRONMENTAL (HSE) POLICY

We at Bam Consults Ltd. are committed to the safety of employees, sub-contractors, workmen and the general public. We recognize that providing and integrating a sound environmental, health and safety program into our business and work operations is key to our success.

It is our policy to;

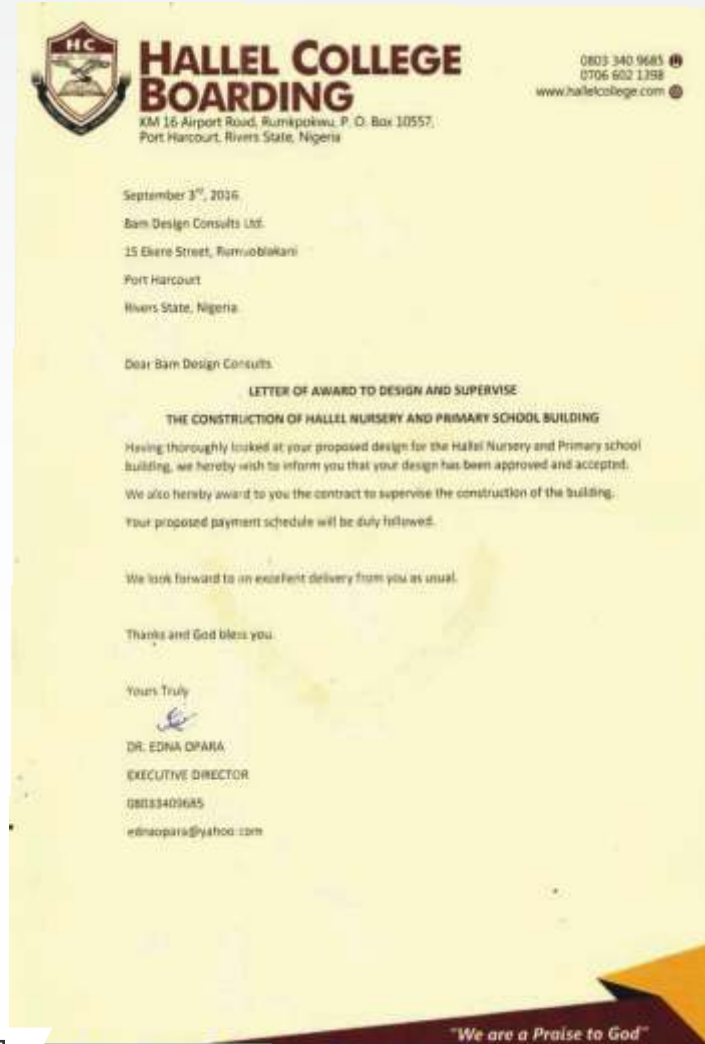
1. Comply with all pertinent environmental and safety laws, rules and regulations, not just because it is legally required, but also because we believe it is the responsible way to conduct our business;
2. Set HSE targets and goals annually to measure our performance, to achieve superior results and to continually improve;
3. Monitor, revise and reemploy safety systems and environmental assessments on a regular basis;
4. Provide education and training to our employees in order for them to have the knowledge, skills, and understanding to perform their responsibilities and duties at the highest level;
5. Routinely review and verify performance with audits, evaluations and other quality assurance and quality control methods;
6. Empower and expect employees, workmen and sub-contractors to promptly report noncompliance or unsafe conditions and to take immediate action to prevent injuries or environmental accidents;
7. Provide relevant safety and health information to employees, workmen and sub-contractors and require them to undergo proper training for the safe, environmentally sound performance of their work; and
8. Communicate our commitment to this policy to our subsidiaries, affiliates and contractors and seek their support.

As a condition of employment, all employees, workmen and sub-contractors are required to comply with all safety- and environmental-related rules and regulations. Each employee understands that they are individually responsible for their own safety and the safety of those around them. Violation of this policy will be cause for disciplinary action up to and including termination of employment.

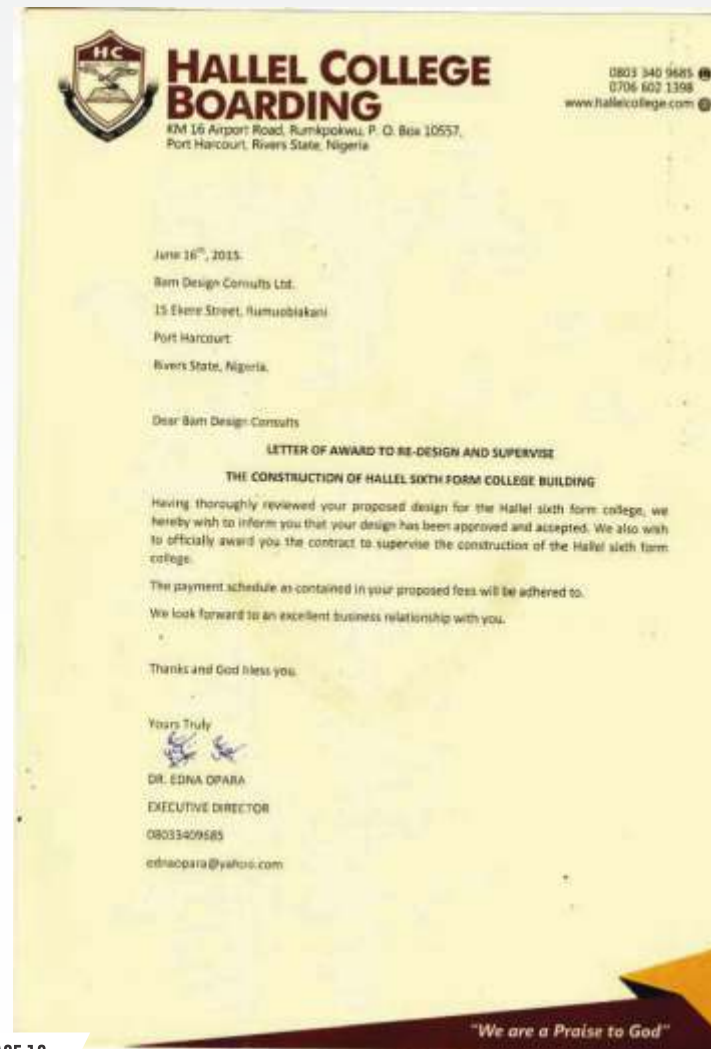
**Abraham Emeruwa**  
(Managing Director)















# DESIGNS







6 BEDROOM BUNGALOW







3 UNITS OF 3 BEDROOM  
TERRACE DUPLEX





SHOPPING PLAZA  
& EVENT HALL







MODERN HOTEL  
BUILDING











PRIMARY SCHOOL  
BUILDING











**4 BEDROOM  
DUPLEX**











5 BEDROOM DUPLEX







**5 BEDROOM  
DUPLEX**







**5 BEDROOM DUPLEX**







**6 BEDROOM DUPLEX  
(WITH A ROOFTOP SIT OUT)**







6 BEDROOM DUPLEX











## 6 BEDROOM HOME







6 UNITS OF 2 BEDROOM  
APARTMENTS







6 UNITS OF 2 BEDROOM  
TERRACE APARTMENTS







**10 BEDROOM MANSION**







APARTMENT BUILDING







**CONTEMPORARY  
CHURCH BUILDING**

PAGE 57



PAGE 58







**MODERN OFFICE BUILDING**







SWIMMING POOL SIDE







**4 UNITS OF 2 BEDROOM TERRACE DUPLEXES  
ENEKA, PORT HARCOURT**







**2 BEDROOM  
BUNGALOW**

PAGE 65



PAGE 66







**3 BEDROOM  
BUNGALOW**

PAGE 67



PAGE 68





**LUXURIOUS 5 BEDROOM HOME  
(inclusive of a pent house)**







# PROJECTS

COMPLETED & ONGOING

PAGE 71



PAGE 72

RESIDENTIAL MANSION,  
MBANO, IMO STATE.







**A LEVEL SCHOOL BUILDING  
FOR HALLEL COLLEGE,  
PORT HARCOURT**







**RESIDENTIAL BUILDING AT  
OBOSI, ANAMBRA STATE**







**NURSERY AND PRIMARY  
SCHOOL BUILDING FOR  
HALLEL COLLEGE  
PORTHARCOURT**







LANDMARK SIGNAGE FOR JEPHTHAH  
COMPREHENSIVE SECONDARY SCHOOL,  
PORTHARCOURT







**RESIDENTIAL BUILDING  
AT WOJI, PORT HARCOURT**



**ASSEMBLIES OF GOD CHURCH  
BUILDING, RUMUOMASI,  
PORT HARCOURT**







**RESIDENTIAL BUILDING AT  
LEKKI, LAGOS STATE**



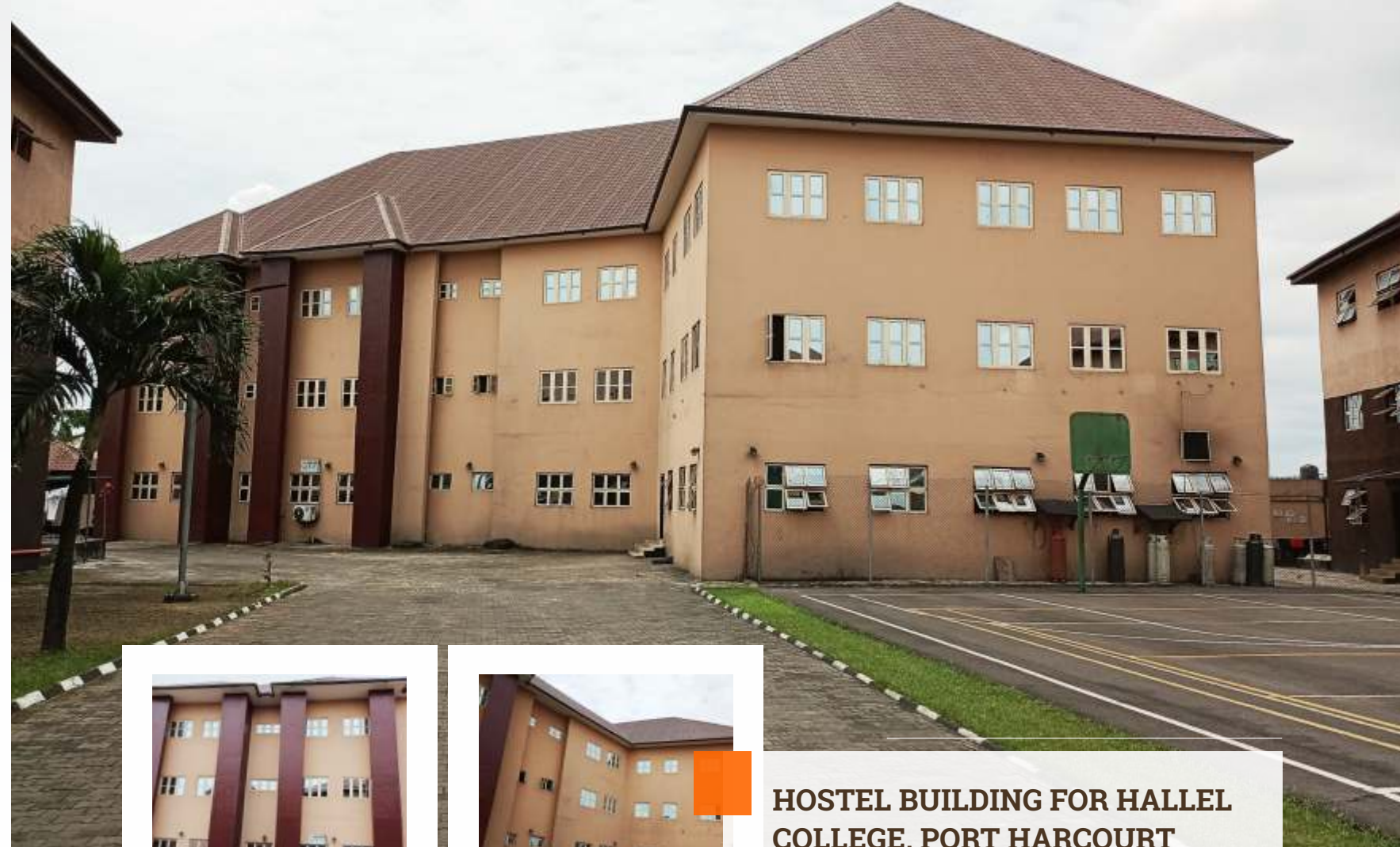
**PARSONAGE FOR ASSEMBLIES OF GOD  
CHURCH, WOJI, PORT HARCOURT**







**BLOCK OF  
FLATS AT WOJI,  
PORT HARCOURT**



**HOSTEL BUILDING FOR HALLEL  
COLLEGE, PORT HARCOURT**





**WAREHOUSE  
AT MGUOBA,  
PORT HARCOURT**







**RESIDENTIAL BUILDING, MINI-ORLU,  
ADA GEORGE PORT HARCOURT**









**6 BEDROOM HOME,  
OWERRI, IMO STATE**



PAGE 93



**6 BEDROOM HOME, NVUGWE,  
PORT HARCOURT**



PAGE 94





**MANSION,  
PORT HARCOURT**







PAGE 97



**4 BEDROOM  
DUPLEX**



PAGE 98





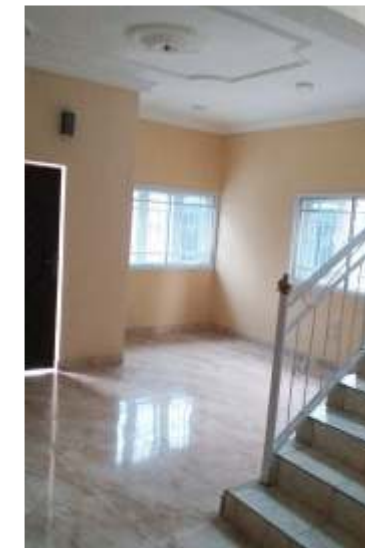
**4 BEDROOMS SEMI-DETACHED DUPLEX AND 2 BEDROOMS  
SEMI-DETACHED DUPLEX ENEKA, PORT HARCOURT**







**4 UNITS OF 2 BEDROOM SEMI-DETACHED APARTMENTS  
RUMUOKWURUSHI, PORT HARCOURT**







**4 UNITS OF 2 BEDROOM SEMI-DETACHED APARTMENTS  
OGBATAI, WOJI - PORT HARCOURT**







**4 UNITS OF 2 BEDROOM TERRACE DUPLEXES  
ENKA, PORT HARCOURT**







**5 BEDROOM DUPLEX RUMUOGBA,  
PORT HARCOURT**







**6 BEDROOM BUNGALOW IBREDE,  
DELTA STATE**







**7 BEDROOM HOME WITH 2 SITTING ROOMS.  
ALL ROOMS SPACIOUS AND ENSUITE UMUAHIA,  
ABIA STATE**











SCHOOL BUILDING. RUKPOKWU,  
PORT HARCOURT







**SWIMMING POOL DESIGN & CONSTRUCTION.  
RUMUAGHOLU, PORT HARCOURT**







**HILLVIEW GATE PROJECT**







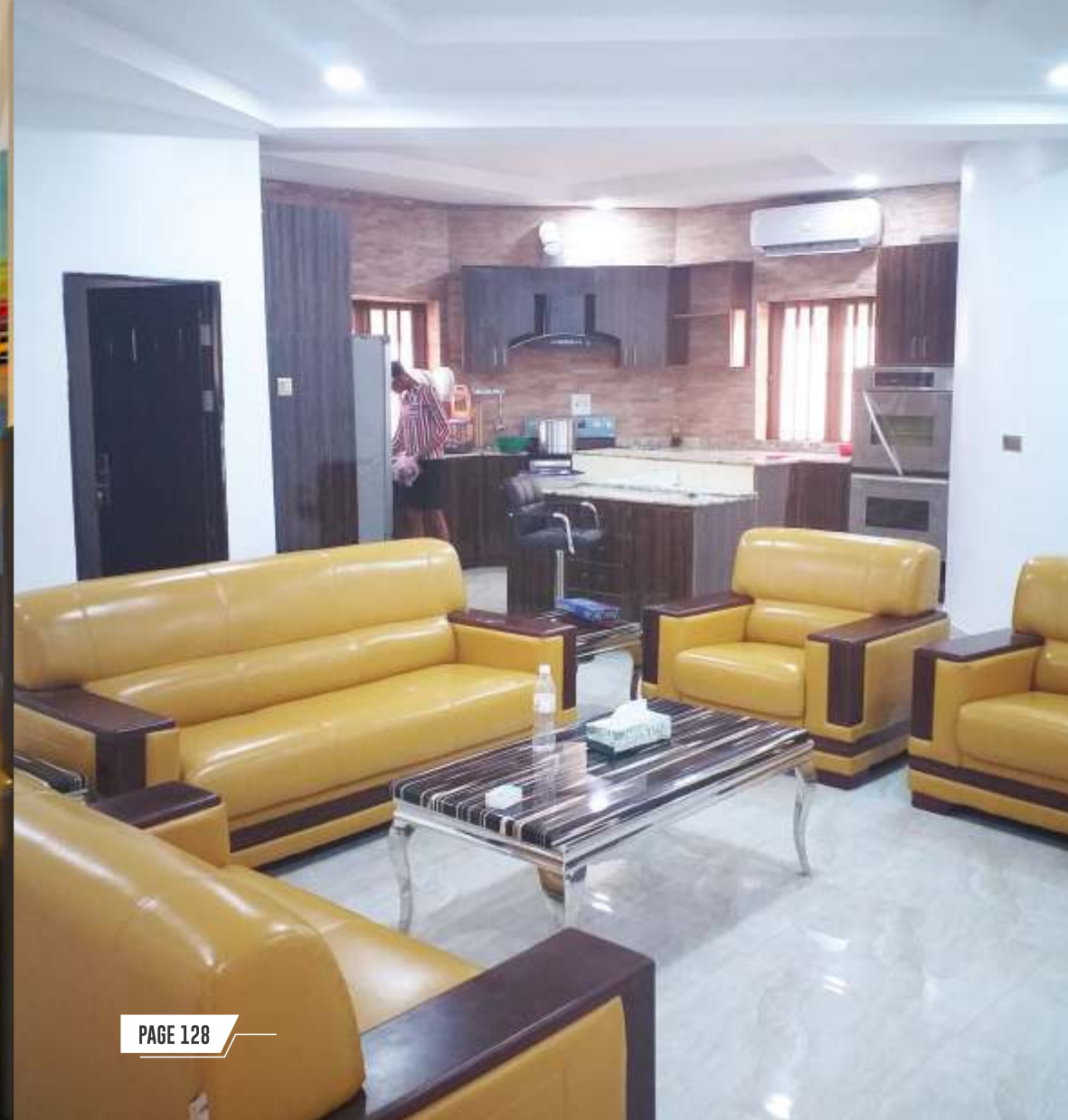
























RESTAURANT INTERIOR

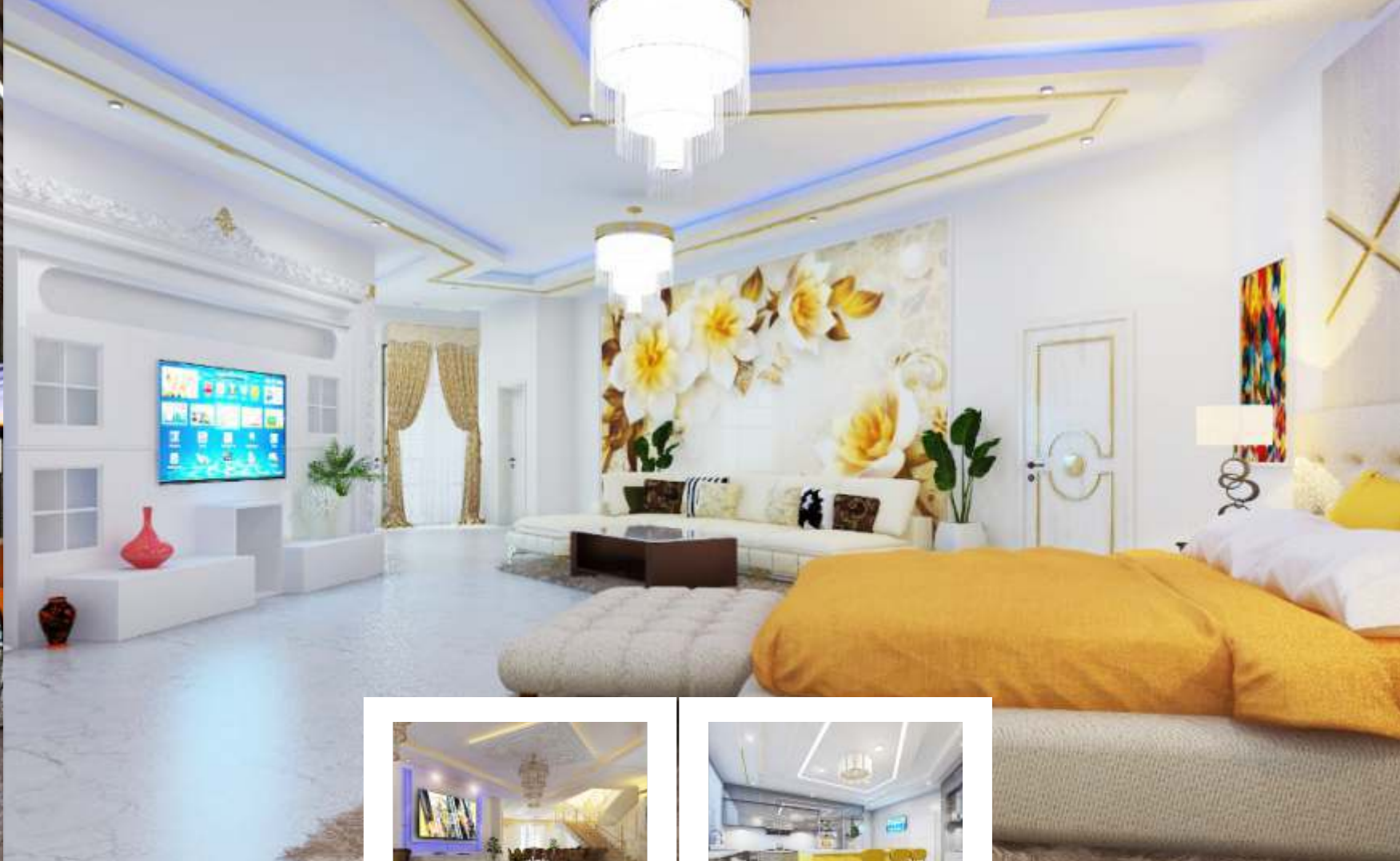






## RESIDENTIAL INTERIOR

PAGE 135



PAGE 136





